

FQHC Specialty Referrals in the Central Valley

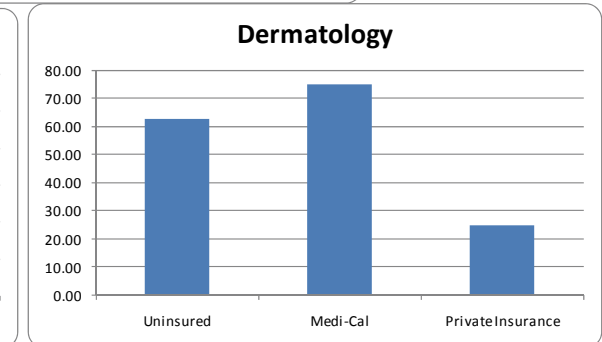
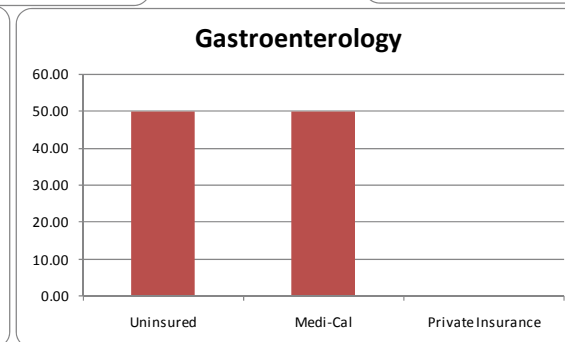
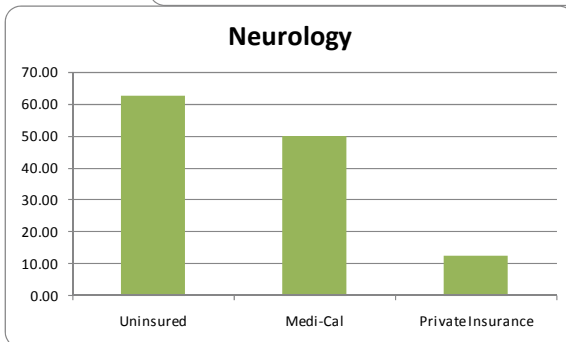
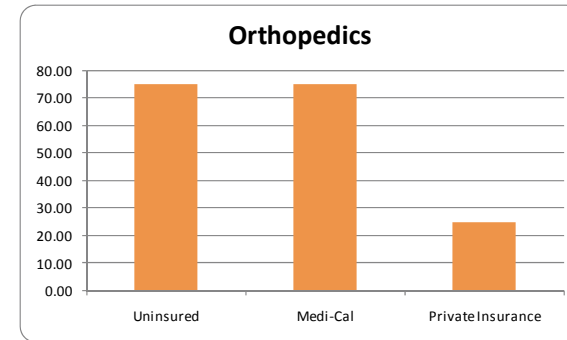
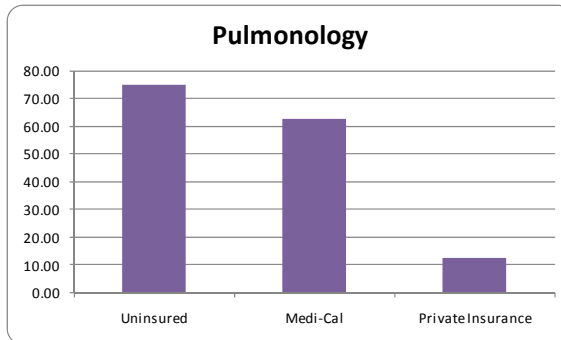
QUICK REFERENCE GUIDE

The San Joaquin Valley is home to eight Federally Qualified Health Clinics (FQHCs) providing health care services at sixty clinics sites in Fresno, Kern, Madera, Merced, San Joaquin, Stanislaus and Tulare counties. They provide services to almost 300,000 patients annually in over 1 million medical visits per year. FQHCs serve a disproportionate amount of Medi-Cal and uninsured patients and provide them with a wide array of primary care services. However, FQHCs face significant obstacles in providing access to specialty care for the uninsured and Medi-Cal patients that go well beyond the difficulties of other residents of the San Joaquin Valley with health insurance.

Rate of Specialists per 100,00 Persons

Region	Rate
Northern/Sierra Counties	55
Sacramento Area	89
Greater Bay Area	122
San Joaquin Valley	43
Southern California	86
Central Coast	79
Statewide	87

Percentage of Clinics Reporting Difficulty Making Referrals to Specialists “About Half of the Time”, “Most of the Time” or “Almost Always”



Source: Riordan & Capitman. Health Professional Shortages in the San Joaquin Valley: The Impact on Federally Qualified Health Clinics. CVHPI 2006.



**Fresno
Healthy
Communities
Access
Partners**

2043 Divisadero
Fresno, CA 93703
t: 559.320.0240
f: 559.320.0263

www.fresnohcap.org